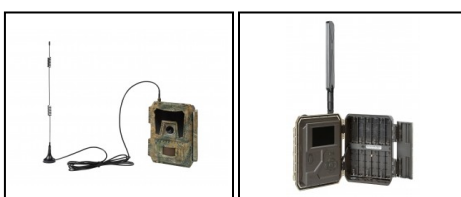


**EUROP-ARM**

Depuis 1973

NUM'AXES PIE1052 4G Cloud Trail Camera

<https://www.europarm.fr/en/produit-16552-NUM-AXES-PIE1052-4G-Cloud-Trail-Camera>

**NUM'AXES**

SKU	Designation	French Law	Length (cm)	Width (cm)	Height (cm)	Weight (g)	Battery	MSRP
NUM540	Photo trap PIE1052	Vente libre	14.8	11.6	7.6	418	LR-6 - AA	370.00-€ incl. tax 277.50 € incl. tax

Receive your photos remotely via the Cloud and the included multi-operator SIM.

The **NUM'AXES PIE1052 4G Cloud Camera Trap** is a **connected camera trap** that comes with a multi-operator SIM card and cloud access. Designed for **territory monitoring** and **wildlife observation**, it allows for remote image reception and management via a mobile app.

- **SIM card:** Multi-operator provided (Orange, SFR, Bouygues - France)
- **Storage:** Cloud via PIE Cloud application (iOS/Android)
- **PIR detection angle:** 100°
- **Viewing angle:** 100°
- **Detection range:** approx. 20 m
- **Flash:** 60 invisible black LEDs - range approx. 20 m
- **Photo resolution:** 8 / 12 / 24 MP
- **Video resolution:** WVGA / HD 720P / Full HD 1080P (audio)
- **Trigger speed:** approx. 0.4 s
- **Protection:** IP66

Cloud transmission and remote management

In the field, responsiveness is key. Thanks to the pre-installed **multi-operator SIM card**, the device automatically selects the best-performing network (Orange, SFR, or Bouygues Telecom in France). Photos are sent to a **secure cloud storage space**, accessible 24/7 via the free **PIE Cloud** app. Five plans are available, including a free one, with no commitment for monthly subscriptions.

100° wide-angle PIR sensor

With a **100° detection angle** and a range of approximately 20 meters, the passive infrared sensor effectively detects movement. Sensitivity is adjustable (low, medium, high) to adapt monitoring to

the environment - dense undergrowth, forest edge, or open area.

Invisible infrared flash 60 LEDs

Equipped with **60 invisible black LEDs**, the flash offers a range of approximately 20 meters without visible emission. Automatic activation based on ambient light and the ability to deactivate some of the LEDs help prevent overexposure at night, especially when the device is installed at close range.

Versatile capture modes

Several configurations are available: **Photo** (1 to 2 shots per trigger), **Video with audio** (10 seconds), or **Photo + Video**. The **Time Lapse** mode captures at regular intervals, while the hybrid mode combines PIR detection and programmed intervals.

- **Photo format:** JPEG (640x480 Cloud / HD 1920x1440 on request)
- **Video format:** MOV
- **Memory:** SD or micro SD card, 4 to 32 GB (minimum class 10, not included)
- **Loop recording:** Programmable ON/OFF
- **GPS:** Integrated Geolocation
- **Labeling:** Date, time, temperature, moon phase, device ID, battery level, GPS coordinates

Robust design and autonomy

IP66 certified, it is weatherproof. Power is supplied by **12 AA batteries** (alkaline or rechargeable Ni-MH) with the option of an external 12V power supply or solar panel. The included remote antenna (2m cable, magnetic base) improves reception in areas with weak coverage.

Field ergonomics

Compact (148 x 116.5 x 75.5 mm) and lightweight (418 g without batteries), it features a 2.4" color TFT screen for settings and direct viewing. The USB port facilitates file export. A password and programmable ID enhance multi-device management.

FAQ

Does the trap work with a different SIM card?

No, the device works exclusively with the multi-operator SIM card supplied and pre-installed.

Can we receive the photos in high definition?

Yes, photos sent to the Cloud are 640 x 480 pixels by default, with the possibility of receiving HD 1920 x 1440 pixel images on request.

Which memory card is compatible?

The model accepts SD or micro SD cards (with adapter) from 4 to 32 GB, class 10 minimum.

Les prix de vente conseillés sont mentionnés à titre indicatif. Les armuriers sont libres de vendre au prix qu'ils souhaitent. Textes et photos non contractuels, sujet à modification.