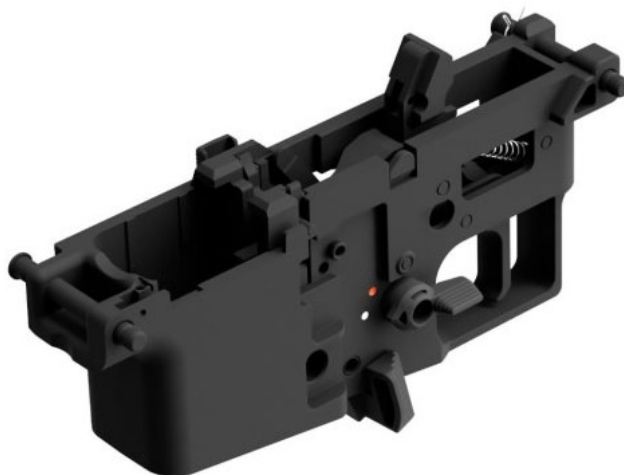




EUROP-ARM
Depuis 1973

Lower Complete VMP-2 - Semi-Auto only - Vorsk

<https://europarm.fr/en/produit-20359-Lower-Complete-VMP-2-Semi-Auto-only-Vorsk>



SKU	Designation	French Law	MSRP
A63092	VMP-2 Complete Trigger Group (Semi Only)	Vente libre	74.00 € incl. tax

Optimize your airsoft performance with this complete trigger group specially designed for Vorsk VMP-2 models, providing precise and reliable semi-automatic firing mode.

The VMP-2 - Semi-Auto Complete Trigger Group essential component Vorsk semi-automatic mode only increased precision optimal control easy installation perfect compatibility

Why Choose This Semi-Auto Relaxation Group?

Opting for a **semi-automatic** fire mode allows players to improve their **accuracy** and **efficiently manage** their ammunition consumption. This trigger group is ideal for scenarios requiring **selective fire** and **total control** over each shot fired.

Technical characteristics:

- **Compatibility:** Specifically designed for Vorsk **VMP-2** models.
- **Firing Mode: Semi-automatic only** , for precise firing control.
- **Materials:** Made with high quality materials for **durability** and **reliability** .
- **Installation:** Design for **quick and hassle-free assembly** .

Benefits :

- **Improved Accuracy:** Semi-automatic mode allows for more precise and controlled shots.
- **Optimized Ammunition Management:** Reduces bullet consumption by avoiding unnecessary burst shots.
- **Ease of Use:** Designed to be easily installed and used, even in the field.

FAQ - Frequently Asked Questions

1. Is this trigger group compatible with other models than the VMP-2?

No, this trigger group is specifically designed for Vorsk VMP-2 models.

2. Does installation require any special tools?

No, installation is simple and does not require any specific tools. The component mounts directly without modifications.

3. Does this trigger group improve the rate of fire of the replica?

This trigger group configures the replica in **semi-automatic mode only** , which allows **precise control** of shots, but does not allow burst firing.

4. Can I switch back to full-auto mode after installation?

No, once installed, this trigger group limits the replica to **semi-auto mode only** . To return to full-auto mode, it would be necessary to reinstall the original trigger group or a compatible model.

5. How to maintain this relaxation group?

Regular maintenance is recommended. Gently clean the components to remove residue and ensure that the trigger mechanism remains smooth.

Les prix de vente conseillés sont mentionnés à titre indicatif. Les armuriers sont libres de vendre au prix qu'ils souhaitent. Textes et photos non contractuels, sujet à modification.