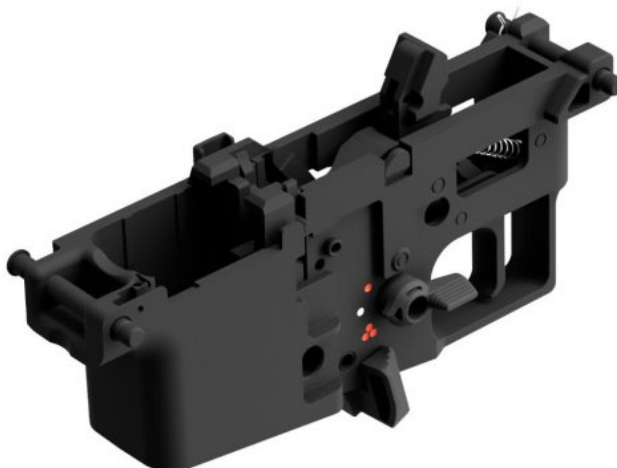




**EUROP-ARM**  
Depuis 1973

Lower Complete VMP-2 - Fire Selector - Vorsk

<https://europarm.fr/en/produit-20360-Lower-Complete-VMP-2-Fire-Selector-Vorsk>



SKU	Designation	French Law	MSRP
A63091	VMP-2 Complete Trigger Group (Select Fire)	Vente libre	74.00 € incl. tax

Specially designed for Vorsk VMP-2 models, offering a selection between semi-automatic and full-automatic firing modes.

The VMP-2 Complete Trigger Group - Fire Selector is an essential component of the Vorsk semi-automatic/full-automatic models, offering increased versatility, optimal control, easy installation, and perfect compatibility.

#### Why Choose This Selector Trigger Group?

Opting for a trigger group with fire selector allows you to adapt your replica to different game situations. Whether you need **precision** with the semi-automatic mode or **firepower** with the full-automatic mode, this component gives you the **flexibility you need** to dominate the field.

#### Technical characteristics:

- **Compatibility:** Specifically designed for Vorsk **VMP-2** models.
- **Firing Modes:** **Semi-automatic** and **full-automatic**, for adaptation according to the needs of the game.
- **Materials:** Made with high quality materials for **durability** and **reliability**.
- **Installation:** Design for **quick and hassle-free assembly**.

#### Benefits :

- **Versatility:** Easily switch between firing modes to adapt to different game situations.
- **Enhanced Control:** Select the appropriate shooting mode to optimize your strategy on the field.
- **Ease of Use:** Designed to be easily installed and used, even during gameplay.

#### FAQ - Frequently Asked Questions

##### 1. Is this trigger group compatible with other models than the VMP-2?

No, this trigger group is specifically designed for Vorsk VMP-2 models.

##### 2. Does installation require any special tools?

No, installation is simple and does not require any specific tools. The component mounts directly without modifications.

##### 3. Does this trigger group allow easy switching between semi and full-automatic modes?

Yes, once installed you can easily select the desired firing mode using the built-in selector.

#### **4. Does this component affect the rate of fire of the replica?**

This trigger group allows you to choose between **precise shots in semi-automatic** or bursts in **full-automatic** , giving you complete control over the rate of fire.

#### **5. How to maintain this relaxation group?**

Regular maintenance is recommended. Gently clean the components to remove residue and ensure that the trigger mechanism remains smooth.

*Les prix de vente conseillés sont mentionnés à titre indicatif. Les armuriers sont libres de vendre au prix qu'ils souhaitent. Textes et photos non contractuels, sujet à modification.*