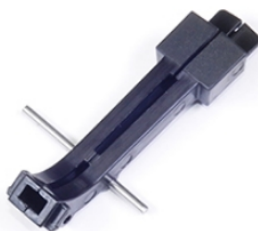


**EUROP-ARM**

Depuis 1973

Lee Precision Pro 6000 Primer Bait

<https://www.europarm.fr/en/produit-21461-Lee-Precision-Pro-6000-Primer-Bait>

**NEW**

SKU	Designation	French Law	MSRP
LE884	Lee Precision Pro 6000 Primer Bait	Vente libre	7.00 € incl. tax

Optimizes primer feeding on Six Pack Pro press.

The **Lee Precision Pro 6000 Primer Rail** is an original part designed to ensure a smooth and consistent feed of **primers** on progressive presses.

- **Compatibility:** Lee Precision Six Pack Pro 6000 Press
- **Function:** Guiding and feeding of primers
- **Configuration:** Delivered assembled with pin
- **Part type:** Original manufacturer component
- **Installation:** Direct assembly without modification

Controlled primer feeding

In progressive reloading, the consistency of the **priming** system is essential. This ramp ensures precise guidance of the **primers** from the dispenser to the insertion station. In practice, the smoothness of the movement and the consistent feed are immediately noticeable - two key elements for maintaining a sustained rate while preserving perfect regularity.

Designed for the Six Pack Pro 6000

Specifically developed for the **Lee Precision Six Pack Pro 6000**, this part meets the manufacturer's original tolerances. Installation is simple and straightforward, requiring no special adjustments. This is exactly the kind of component you would replace to restore optimal performance after wear or if the original part is lost.

Original manufacturer part

Choosing an official **Lee Precision** part guarantees mechanical compatibility and safe **reloading**. The materials used ensure robustness and longevity, even under intensive use in workshops or gun shops.

FAQ

Is this ramp compatible with other Lee presses?

No, it is specifically designed for the Lee Precision Six Pack Pro 6000 press. Compatibility with other models is not guaranteed.

Is the part delivered ready to install?

Yes, the ramp comes assembled with its pin, ready to be mounted directly onto the press.

Why replace the priming ramp?

A replacement may be necessary in case of wear, loss, or to restore a smooth and regular primer supply during heavy use.

Les prix de vente conseillés sont mentionnés à titre indicatif. Les armuriers sont libres de vendre au prix qu'ils souhaitent. Textes et photos non contractuels, sujet à modification.