

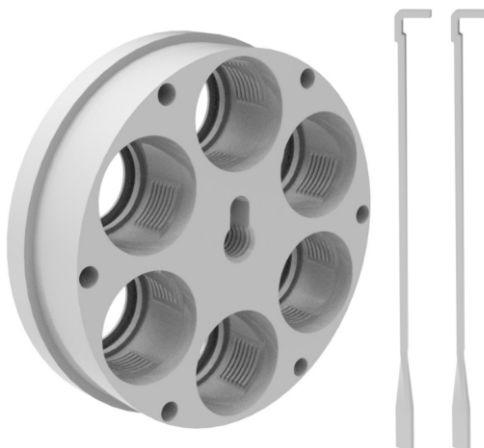


EUROP-ARM

Depuis 1973

Lee Ultimate Tool Carrier 3 and 6 Stations

<https://europarm.fr/en/produit-21516-Lee-Ultimate-Tool-Carrier-3-and-6-Stations>



SKU	Designation	French Law	MSRP
LE933	Lee Ultimate Tool Carrier 3 and 6 Stations	Vente libre	52.00 € incl. tax

Lee tool holder for Ultimate Turret Press with 3 or 6 station configuration.

The **Lee Ultimate Tool Carrier 3 and 6 Stations** is a tool carrier designed for the **Lee Ultimate Turret Press**. Precision machined on all surfaces, it allows for the installation of multiple reloading tools and optimizes operations thanks to a quick-change system using **Lee Breech Lock Bushings**.

- **Type:** Tool holder for reloading press
- **Compatibility:** **Lee Ultimate Turret Press** (ref. 91910) and associated kits
- **Configuration:** support 3 or 6 stations
- **Tool compatibility:** Lee Breech Lock bushings
- **Machining:** precision machined surfaces
- **Indexing:** 3 and 6 position indexing rods included
- **Usage:** quick installation of reloading tools

A tool holder designed for the Ultimate Turret Press

The **Lee Ultimate Tool Carrier** is specifically designed for the **Ultimate Turret Press**. It allows for the simultaneous mounting of multiple reloading tools to optimize operations and accelerate configuration changes.

Depending on the configuration used, it can operate with a **3-station** or **6-station** system, thus offering great flexibility for different stages of recharging.

Precision machining

Each tool holder is **precision machined** on all surfaces to ensure perfectly stable tool positioning. This precision helps maintain correct alignment between the case and the tool, an essential element for producing consistent ammunition.

The rigidity of the part also allows for excellent repeatability during recalibration, seating or crimping operations.

Breech Lock compatibility

Each station is designed to accept a **Lee Breech Lock bushing** . This system allows for quick removal and reinstallation of tools without altering their settings.

Reloaders can thus prepare several tool holders with different sets of tools and switch from one caliber to another with minimal handling.

- **Stations:** 3 or 6 positions
- **System:** Breech Lock Bushings
- **Compatibility:** Ultimate Turret Press
- **Indexing:** indexing rods included

FAQ

Is this tool holder compatible with all Lee presses?

No. It is specifically designed for the Lee Ultimate Turret Press and associated kits.

What tools can be installed on this tool holder?

It accepts standard tools mounted in Lee Breech Lock bushings, allowing for quick tool changes without altering settings.

Are the indexing rods included?

Yes. Indexing rods for 3 and 6 station configurations are included with the tool holder.

Les prix de vente conseillés sont mentionnés à titre indicatif. Les armuriers sont libres de vendre au prix qu'ils souhaitent. Textes et photos non contractuels, sujet à modification.