

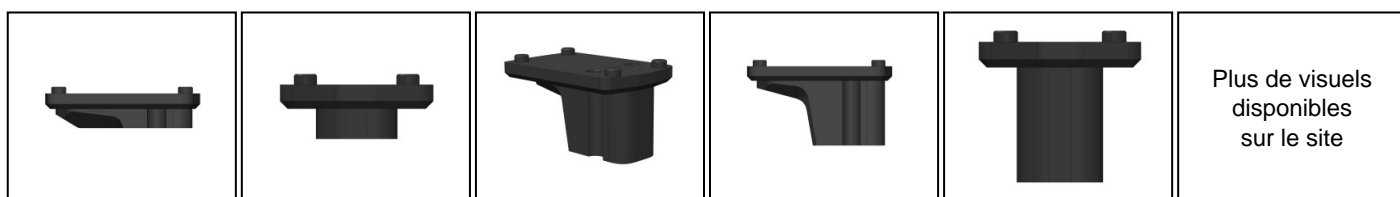
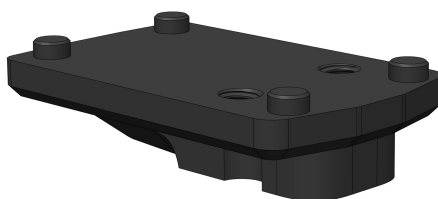


**EUROP-ARM**

Depuis 1973

**Scalarworks Mounting Kick/08 RMSC - DPP 12 O'clock**

<https://europarm.fr/en/produit-21657-Scalarworks-Mounting-Kick-08-RMSC-DPP-12-O-clock>



Plus de visuels  
disponibles  
sur le site

 SCALARWORKS

**NEW**

SKU	Designation	French Law	Height (cm)	Weight (g)	Mounting	MSRP
SW43501	down	Vente libre	1.4	12	21mm rail	90.00 € incl. tax
SW43202	high	Vente libre	2.7	22	-	90.00 € incl. tax

**Position your red dot at 12 o'clock on your FUSE one-piece mount.**

The **Scalarworks KICK/09** is a rail extension designed to accommodate magnifiers and laser modules on a compact platform, with perfect alignment and a controlled footprint.

- **Configurations:** Magnifier, Laser, Combo Laser + Magnifier
- **Material:** 7075-T6 Aluminum
- **Finish:** Type III anodizing
- **Height under lens:** 1.57" (? 39.9 mm)
- **Height:** SW4200: 14 mm
- **Height:** SW4220: 27 mm
- **Weight:** 12 to 22 g depending on the version
- **Origin:** United States

### Box contents

- **Media:** Scalarworks® KICK/06™
- **Screws:**
  - (2) #6-32 x 0.4375" Nylon Pan Head Screw
  - (2) M4 x 0.7 nylon socket head cap screw
- **Tools :**
  - Scalarworks® T15 Torx Bit
  - Scalarworks® T20 Torx Bit

**A red dot in the 12 o'clock position for instant acquisition**

The **Scalarworks KICK/08** allows for the integration of a **red dot sight** directly above the main optic. In practice, a slight tilt of the head is all it takes to switch from magnification to rapid aiming, without changing the shooting position. This configuration is particularly appreciated for its improved responsiveness.

### **Two heights for a precise adjustment**

Available in **low (SW4200 - 14 mm)** and **high (SW4220 - 27 mm)** versions, this mount allows you to perfectly adapt the red dot's position to your setup. This choice directly influences visual comfort and acquisition speed-a detail that makes all the difference in the field.

### **Extended compatibility with micro red dots**

The **KICK/08** is designed to accommodate popular optics such as the **Leupold DeltaPoint Pro** , **RMSc** standard models, as well as modern options like the **Eotech EFLX** or the **Vortex Defender** . It integrates perfectly with **Scalarworks FUSE** mounts, ensuring mechanical and aesthetic consistency.

### **Robust construction and lightweight**

Made from **7075-T6 aluminum** with **4140H steel** components, this bracket combines lightness and strength. **Type III** anodizing and **Flash Nitride** treatment ensure excellent durability. Weighing only **12 to 22 g** , it is virtually unnoticeable once installed.

### **FAQ**

#### **Is this setup compatible with all red dots?**

It is compatible with DeltaPoint Pro and RMSc standard optics, as well as several Eotech and Vortex models.

#### **Which height should I choose between the low and high versions?**

The low version promotes a compact design, while the high version improves visual comfort depending on your configuration.

#### **Is it compatible with all Scalarworks setups?**

It is designed to work with Scalarworks FUSE/02 to FUSE/05 assemblies.

*Les prix de vente conseillés sont mentionnés à titre indicatif. Les armuriers sont libres de vendre au prix qu'ils souhaitent. Textes et photos non contractuels, sujet à modification.*