

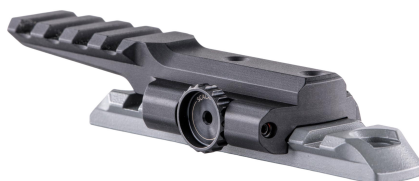


EUROP-ARM

Depuis 1973

Scalarworks raises 0.5" LEAP/15 picatinny QD

<https://europarm.fr/en/produit-21666-Scalarworks-raises-0.5-LEAP-15-picatinny-QD>



 SCALARWORKS

NEW

SKU	Designation	French Law	Height (cm)	Mounting	MSRP
SW170193	height 4.9 cm	Vente libre	4.9	21mm rail	240.00 € incl. tax

Enhance your holosight with an ultra-compact QD mount.

The **Scalarworks LEAP/15** is a quick-release Picatinny riser designed to optimize the height and ergonomics of holosight-type optics.

- **Rail compatibility:** MIL-STD-1913 Picatinny
- **Optical compatibility:** Eotech XPS2, XPS3, 512, 552 and Picatinny optics
- **Co-witness:** Compatible with PEAK/02 1.93"
- **Optical axis height:** 1.93" (? 49 mm)
- **Materials:** 7075-T6 Aluminum / 4140H Steel
- **Finish:** Type III Anodizing / Flash Nitride
- **Weight:** 58 g
- **Origin:** United States

Box contents

- **Support:** Scalarworks® LEAP™

A QD riser designed for holosights

The **Scalarworks LEAP/15** allows you to raise your **holosight** optic to a height of **1.93"**, a feature highly valued for improving shooting posture. In practice, this reduces neck strain and promotes faster target acquisition.

Wide compatibility with Picatinny optics

This mount is compatible with a wide range of **Picatinny** optics, including the **Eotech XPS**, **512**, **552**, as well as other models such as the **Vortex UH-1** or the **Sig Romeo 8T/9T**. A versatile solution for numerous configurations.

Magnifier ready for added versatility

The **LEAP/15** is designed to work with magnifier mounts such as the **Scalarworks LEAP/06** and **LEAP/16** in **1.93"** height, as well as with **Eotech STS** systems via a spacer. This allows for a scalable and high-performance setup.

Quick-Detach system with zero return

Thanks to the **ClickDrive** mechanism, this mount offers quick, tool-free removal while ensuring reliable **zeroing** . In other words, you can remove and reposition your optic without losing your zero - a real advantage in the field.

Robust construction and compact design

Machined from **7075-T6 aluminum** , the **LEAP/15** offers superior mechanical strength. Its compact design and lack of protruding levers minimize snagging and improve weapon handling.

FAQ

Is this setup compatible with all lenses?

It is compatible with optics featuring a Picatinny interface, including Eotech and similar models.

Can a magnifier be used with this setup?

Yes, it is compatible with Scalarworks LEAP/06 and LEAP/16 magnifier mounts as well as Eotech STS systems.

Does the Quick-Detach system retain the setting?

Yes, the system guarantees a reliable return to zero after disassembly and reassembly.

Les prix de vente conseillés sont mentionnés à titre indicatif. Les armuriers sont libres de vendre au prix qu'ils souhaitent. Textes et photos non contractuels, sujet à modification.