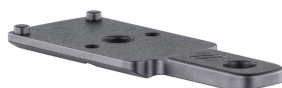




EUROP-ARM
Depuis 1973

Scalarworks Red dot SYNC/02 mount for BERETTA rifle

<https://europarm.fr/en/produit-21668-Scalarworks-Red-dot-SYNC-02-mount-for-BERETTA-rifle>



 SCALARWORKS

NEW

SKU	Designation	French Law	Weight (g)	Mounting	MSRP
SW50501	RMR assembly	Vente libre	16	21mm rail	180.00 € incl. tax
SW50502	Aimpoint Acro Mount	Vente libre	17	21mm rail	180.00 € incl. tax
SW50503	Aimpoint Micro Assembly	Vente libre	25	21mm rail	180.00 € incl. tax

Optimized red dot mount for Beretta tactical rifles.

The **Scalarworks SYNC/02** is a red dot mount designed for **Beretta Tactical** rifles, offering low, reliable and perfectly aligned integration.

- **Weapon compatibility:** Beretta 1301 Tactical, A300 Ultima
- **Versions:** RMR (SW2200), ACRO (SW2210), Aimpoint Micro (SW2220)
- **Co-witness:** Lower 1/10 at 50 yards+
- **Materials:** 7075-T6 Aluminum / 4140H Steel
- **Finish:** Type III Black Anodizing / Nitride Flash
- **Weight:** 16 to 25 g depending on the version
- **Origin:** United States

Box contents

- **Support:** Scalarworks® SYNC/02™
- **Screws:**
 - (2) M4x0.7 screw with nylon patch
- **Tools :**
 - Scalarworks® T10 Torx Bit

A montage dedicated to Beretta tactical rifles

The **Scalarworks SYNC/02** is specifically designed for the **Beretta 1301 Tactical** and **A300 Ultima** models. Its low profile allows for direct mounting on the receiver, ensuring optimal alignment and rapid target acquisition.

Three optical interfaces for maximum compatibility

Available in three versions - **RMR (SW2200)** , **ACRO (SW2210)** and **Aimpoint Micro (SW2220)** - this mount covers most market standards. It accepts lenses from **Trijicon** , **Aimpoint** , **Holosun** , **Vortex** or **Sig Sauer**, depending on the version chosen.

Waterproof platform and smart design

The **RMR** version incorporates an O-ring sealing system directly into the screws, eliminating the need for an intermediate plate. The result: simplified installation and increased reliability in harsh conditions.

Optimized ergonomics and natural co-witness

The **SYNC/02** positions the **red dot** as close as possible to the axis of the weapon, with a **co-witness lower of 1/10** . This configuration promotes instinctive aiming while retaining the use of the mechanical components.

Robust construction and minimal weight

Machined from **7075-T6 aluminum** with **4140H steel** components, this mount offers excellent mechanical strength. Weighing between **16 and 25 g** , it remains discreet while ensuring a reliable attachment.

FAQ

Which version should I choose: RMR, ACRO, or Micro?

The choice depends on the footprint of your lens: RMR for Trijicon/Holosun, ACRO for Aimpoint ACRO, Micro for Aimpoint T1/T2 and compatibles.

Is this assembly waterproof?

Yes, especially the RMR version which incorporates a sealing system without an additional plate.

Which rifles is it compatible with?

It is compatible with the Beretta 1301 Tactical and A300 Ultima.

Les prix de vente conseillés sont mentionnés à titre indicatif. Les armuriers sont libres de vendre au prix qu'ils souhaitent. Textes et photos non contractuels, sujet à modification.