

Press Stand Mounting Plate 1

Side 1:

- Lyman Crusher & Crusher II
- Lyman T-Mag and T-Mag II
- Lyman Ideal
- Lyman Victory
- Lyman All-American 8

Side 2:

- RCBS Rock Chucker and Rock Chucker Supreme
- RCBS Turret
- RCBS Pro 2000
- Hornady AP
- Hornady Iron
- Hornady Lock-N-Load Classic

Side 3:

- Lee Load Master
- Lee Classic Cast
- Lee Pro 1000 (pre-2018)
- Lee Value Turret (pre-2018)
- Lee Pro 1000 (2018+)
- Lee Value Turret (2018+)

Side 4:

- Redding T7

Press Stand Mounting Plate 2

Side 1:

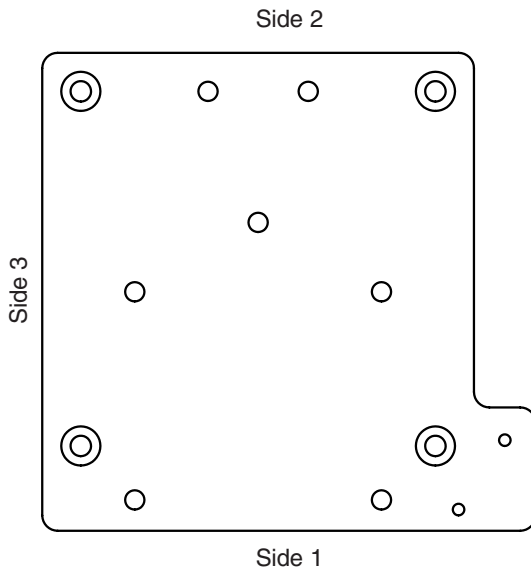
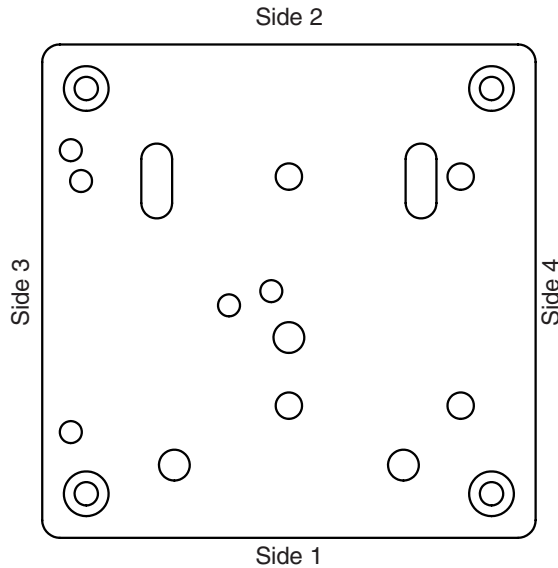
- Dillon 550
- Dillon 650

Side 2:

- Dillon Square Deal

Side 3:

- Blank – Drill your own



Lyman[®]



Universal Press Stand

Instruction Manual

SAVE THESE INSTRUCTIONS

Lyman[®]

475 Smith Street
Middletown, CT 06457

1-860-632-2020
www.lymanproducts.com

Rev. 10/18

The Lyman Universal Press Stand is the only press stand on the market that will accept most current single station, turret and progressive presses of all brands. This heavy duty steel stand comes with two mounting plates pre-drilled for your favorite single station, turret, or progressive press. If by chance you have a press that does not match up with any of the numerous patterns, there is also a blank area where you can drill your own mounting holes. The stand will raise your press 9 1/4" above your bench surface, which will lessen fatigue from having to bend over to cycle your press and provides a clear view of all reloading operations. All hardware needed to mount your press is included. The Universal Press Stand is drilled to allow it to be bolted to your bench, or it can be C-clamped to provide quick removal if desired.

ASSEMBLY OF THE STAND:

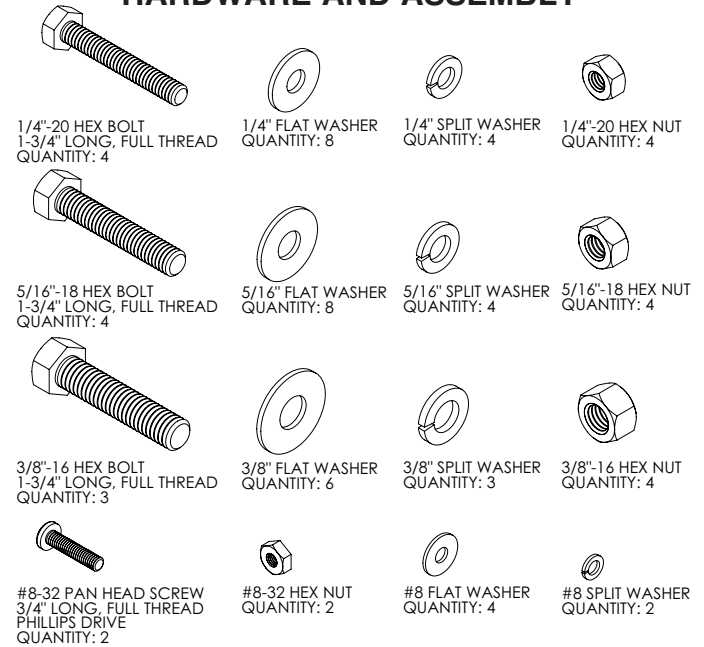
1. Using the supplied 3/4" long button head bolts, 5/16" hex nuts and 5/16" split washers, attach the center support section to the two sides. Only finger tighten the nuts at this time.
2. Using the supplied 3/4" long countersunk bolts, 5/16" hex nuts and 5/16" washers, attach the desired press mounting plate to the two sides. Only finger tighten the nuts at this time. See the chart and diagram on back page showing the bolt pattern of various presses to select the correct mounting plate. Also note that the stand has an angled end and a vertical end. The plate can be positioned facing either end. The angled end will position the press further back onto your bench, while the vertical end will place it closer to the edge of the bench.
3. If you have a press that does not match an existing bolt pattern, use the blank side of the press mounting plate as shown on back page. Mark and drill appropriate holes for your press in the plate and attach it to the stand as described above.
4. Securely tighten all nuts and bolts.
5. The stand can now be attached to your bench with either bolts or with C-clamps (not included). See below on tips when positioning the stand.

TIPS:

- When selecting the position of the mounting plate (facing the angled end or the vertical end) make sure that the press can be cycled fully and that the linkage does not hit the center support. Positioning the press on the vertical end will provide greater clearance for the linkage.
- Before attaching the stand to your bench, cycle the press to see where the handle will be positioned at its lowest point and also where the press linkage swings. If greater press height is desired, the press stand can be raised with wooden blocks.

HARDWARE AND ASSEMBLY

PRESS MOUNTING HARDWARE



ASSEMBLY HARDWARE

